

电加热系统

ELECTRIC HEATING SYSTEM



型 号

TYPE

TEH 112
TEH 112 EX
TEH 118
TEH 126

PRODUCT INTRODUCTION

产品介绍



中集罐程电加热系统为物流运输提供可靠、精确的温度控制方案。TEH 系列是一种电伴热加热系统，通过发热的伴热带均匀地给筒体加热。因其稳定的特性，已成为罐箱主流的电加热方式。

TEH 112 为定制的温度加热系统，可将货物温度保持在 30°C至 120°C (86 至 248°F)，温度保持精度可以达到 $\pm 1^\circ\text{C}$ 。

除此之外，TEH 118 高温加热系统能将货物温度保持在 120°C至 180°C (248 至 356°F) 之间。而带有金属 MI 电缆的 TEH 126 则可将液体温度保持在 260°C (500°F) 以上。

CIMC Tankmiles® electric heating system provides reliable and accurate temperature control for superior logistics transportation. The TEH series is an electric trace heating system capable of evenly heating the tank cylinder body via the trace heating cable. Due to its reliability, cable trace heating has become the main electric heating technology of the tank industry.

The TEH 112 is a fully customizable temperature heating system which is able to maintain cargo temperatures between 30°C and 120°C (86 and 248°F) within an accuracy of $\pm 1^\circ\text{C}$.

In addition to the above, when high temperature heating is required, the TEH 118 can safely maintain cargo temperatures between 120°C and 180°C (248 and 356°F). And with metal MI cable, the TEH can maintain temperature up to 260°C (500°F).

产品性能优势

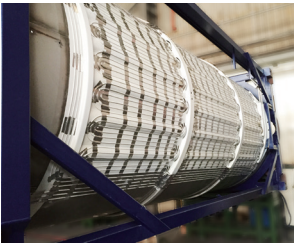
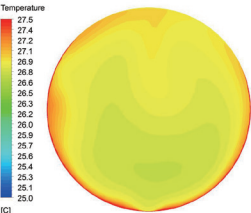


- ◆ 专业漏热计算
- ◆ 整齐布线, 高效传热
- ◆ 可靠的配件选型
- ◆ 多道实验验证
- ◆ 丰富的加热配件选择

EQUIPMENT ADVANTAGES



- ◆ Accurate heat loss calculation
- ◆ Efficient design, layout and routing
- ◆ Reliable selection of components
- ◆ Multiple validations
- ◆ Various add on accessories available



型号		TYPE	
30°C-120°C	TEH 112 (TEH 112 EX)	30°C-120°C	TEH 112 (TEH 112 EX)
120°C-180°C	TEH 118	120°C-180°C	TEH 118
>180°C	TEH 126	>180°C	TEH 126
性能		PERFORMANCE	
环境温度	-25°C~60°C	Operating Temperature	-25°C~60°C
加热功率 @400v	5.0kW, 7.2kW, 7.5kW, 8.9kW, 10kW, 11.6kW, 13kW, 14.4kW, 15.9kW, 18.0kW	Heating Capacity@400v	5.0kW, 7.2kW, 7.5kW, 8.9kW, 10kW, 11.6kW, 13kW, 14.4kW, 15.9kW, 18.0kW
操作电压	□ 380-440V, 3AC 50/60HZ □ 220V, 3AC 50/60HZ 可定制	Operate Voltage	□ 380-440V, 3AC 50/60HZ □ 220V, 3AC 50/60HZ Customizable
精度选择项	±1°C minimum / ±2°C / ±5°C	Tolerance Options	±1°C minimum / ±2°C / ±5°C
选配		OPTIONAL	
加热选项	阀件加热, 溢流盒加热, 底盒加热, 虹吸管加热, 管道加热	Heating Optional	Valve heating, Spillbox heating, Bottom cabinet heating, Syphon tube heating, Pipe heating
智能配件	SAVVY FleetTrac-B	Telematic Pro	SAVVY FleetTrac-B
适用罐箱		CAPACITY OF TANK	
容积	5400L~26000L	Volume	5400L~26000L
箱型	适用于 ISO 罐箱, 梁式罐箱, 框架式罐箱, CIMC BURG 罐箱, Swapbody 罐箱, Offshore 罐箱	Container type	Suitable for ISO Tank, Beam Tank, Collar Tank, CIMC BURG Tank, Swapbody Tank, Offshore Tank

Smart Tankheating System

How do I know if my system arrives in the right status?

控制柜
Control Cabinets



智能终端
Savvy FleetTrac



LOG IN
www.tankmiles.com



远程解决方案



高性能的跟踪与追溯, 系统不仅能使我们实时精确地获取所有装运货物信息, 而且可以监控加热系统的运行状态。一旦某个设备报告中断或温度低于目标值, 系统将发出警报。防止温度敏感的货物变质 (如粘合剂) 造成巨额损失, 从而保障装运价值。即使温度偏差仅为 1°C, 也能被监测到。

并且您在办公室就可以轻松实现对系统的远程控制, 快来体验我们的专属增值服务吧。

REMOTE CONTROL SOLUTION

High performance telematics provide live tracking & tracing data making it possible to monitor shipments accurately and in real-time. If a system reports any failure, or the temperature falls outside the set parameters, the system immediately triggers an alarm. Continuous monitoring of the container temperature helps protect valuable cargo and prevent damages whilst in transit. This is particularly useful for use with sensitive products, such as some adhesives, which can easily spoil with temperature variations of only ±1°C.

You can also achieve remote control, such as adjusting temperature settings, to benefit from this exclusive value-added service.

乙二醇加热系统

GLYCOL HEATING SYSTEM

Tankmiles
www.tankmiles.com



型 号
TYPE

TGH 012
TGH 036

PRODUCT INTRODUCTION

产品介绍

TGH 系列产品是一种通过流体换热实现罐箱加热的系统，用于罐箱加热和保温。TGH 012/036 对应低 / 高两个功率配置，供客户选择。

加热机组提供稳定的热源，在控制系统的精确管控下，通过水泵循环乙二醇水溶液，实现罐体表面循环换热，达到 $\pm 1^{\circ}\text{C}$ 的温度管控。

管路的柔性连接保证系统能够在道路运输的恶劣振动环境下可靠运行。控制系统集成了过流、超压保护、正 / 反转自动切换等安全措施，保证系统安全，降低运行风险。可拆卸的安装设计，方便用户维护。

The TGH series is a tank heating system which operates through fluid heat transfer used for tank heating and insulation purposes. The TGH 012/036 allows for 12KW and 36kw heating power for customers to choose from respectively.

The heating unit provides a high-power heat source maintained under the precise influence of the control system. Temperature control of $\pm 1^{\circ}\text{C}$ is achieved by using the heat exchange between a heated glycol aqueous solution and the surface of the tank.

A reliable flexible connection design enables the system to operate flawlessly in service, even during extreme vibration conditions which are often found during road transport. In addition to this, safety features such as over-current, over-voltage and a positive/negative automatic switch has been integrated into the control system to protect it and eliminate operational error. A detachable installation design also facilitates ease of maintenance.

产品性能优势

»»

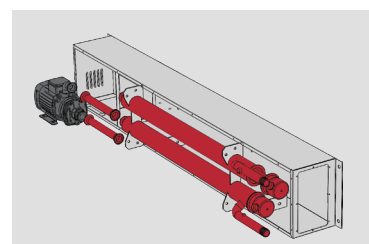


- ◆ 柔性连接，减少硬连接疲劳损伤
- ◆ 模块化组装，易于维护和维修
- ◆ 平稳加热
- ◆ 多级保护，安全可靠

EQUIPMENT ADVANTAGES



- ◆ Flexible connection to reduce risk of vibration fatigue damage
- ◆ Modular assembly ensures ease of maintenance and repair
- ◆ Smooth heating with simple control
- ◆ Built-in protection features for ultimate safety and reliability



型号		TYPE	
TGH 012 TGH 036		TGH 012 TGH 036	
物理特性		CHARACTERISTICS	
外壳 外观尺寸	SUS 304 加热机组 长 / 宽 / 高: 1580/304/216 mm 1880/304/216 mm 控制箱 长 / 宽 / 高: 800/280/130 mm	Enclosures Process Fitting	SUS 304 Heating Unit L/W/H: 1580/304/216 mm 1880/304/216 mm Control Cabinets L/W/H: 800/280/130 mm
性能		PERFORMANCE	
材料	加热管材质 316L 不锈钢 管路及控制箱材质 304 不锈钢	Materials	Heater: SUS 316L Tube & box: SUS 304
环境温度	-40°C~60°C	Ambient Temperature	-40°C~60°C
加热功率 @400v	TGH 012→12kW TGH 036→36kW	Heating Capacity@400v	TGH 012→12kW TGH 036→36kW
操作电压	380~440V 3AC 50/60Hz	Operate voltage	380~440V 3AC 50/60Hz
温度设置	20°C~80°C	Temperature Setting	20°C~80°C
加热精度	±1°C	Accuracy	±1°C
选配		OPTIONAL	
配件选项	外置负荷开关	Heating Optional	External switch
智能配件	SAVVY FleetTrac-B	Telematic Pro	SAVVY FleetTrac-B

Smart Tankheating System

How do I know if my system arrives in the right status?

控制柜
Control Cabinets



智能终端
Savvy FleetTrac



LOG IN
www.tankmiles.com



远程解决方案



高性能的跟踪与追溯，系统不仅能使我们实时精确地获取所有装运货物信息，而且可以监控加热系统的运行状态。一旦某个设备报告中断或温度低于目标值，系统将发出警报。防止温度敏感的货物变质（如粘合剂）造成巨额损失，从而保障装运价值。即使温度偏差仅为 1°C，也能被监测到。

并且您在办公室就可以轻松实现对系统的远程控制，快来体验我们的专属增值服务吧。

REMOTE CONTROL SOLUTION

High performance telematics provide live tracking & tracing data making it possible to monitor shipments accurately and in real-time. If a system reports any failure, or the temperature falls outside the set parameters, the system immediately triggers an alarm. Continuous monitoring of the container temperature helps protect valuable cargo and prevent damages whilst in transit. This is particularly useful for use with sensitive products, such as some adhesives, which can easily spoil with temperature variations of only ±1°C.

You can also achieve remote control, such as adjusting temperature settings, to benefit from this exclusive value-added service.